

## 2061 Counter/ Batch controller for pulse sensors

- Sensors NPN, PNP, Namur, closing contact or Pick-up
- Input range 0..5 kHz
- 6-digit processor-based LED display, digit height 15mm
- Count up or down
- Alarm/ batch functions
- Scaleable display per pulse
- Display memory
- Serial output RS-232 and RS-485
- Front panel protection IP65
- Sensor supply 24 VDC, max. 150 mA
- Power supply 85..240 VAC or 12..32 VDC/ 24 VAC



The panelmeter 2061 is designed for pulse counting and batch control. The incoming pulses are freely scaleable on display to correspond to the desired number value, e.g. 1 incoming pulse equals to 5,34 on the display. Display memory stores the calculated value in memory for one week without power supply.

The pre-set function makes it possible to use the counter as a batch controller as well. Counting can be done upwards or downwards from the pre-set value. Alarm relays may control other devices. New counting can be started automatically or manually by an external contact.

There are two power supply possibilities, one for 85..240 VAC and the other for 24 VDC/24 VAC, both galvanically isolated from input/output. Front panel protection is IP65.

The panelmeter series 2000 is very flexible and easy to modify by changing input cards for different kinds of sensors, such as temperature sensors, pulse sensors, serial inputs etc. The modification does not require any calibration. The optional cards are the same for all the instruments in this product family. Each panelmeter type has its own datasheet.

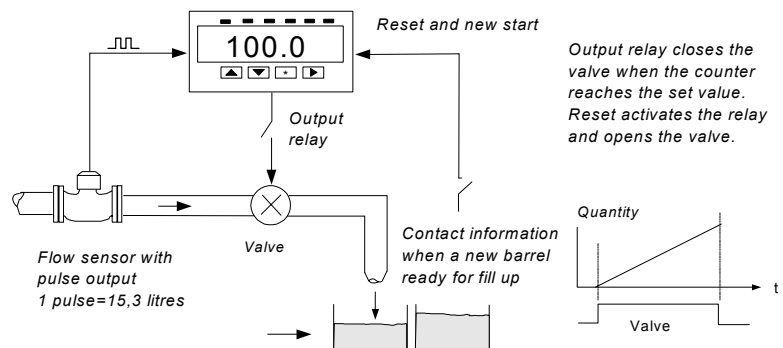
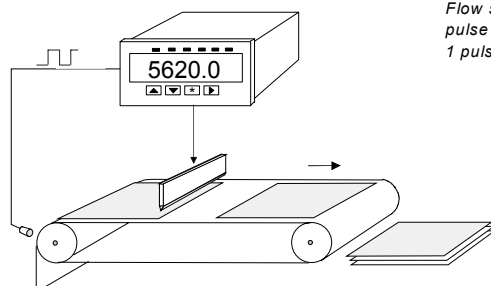
Separate field enclosures can be supplied for 1 to 3 panelmeters. The 2061 is also available in the field display series, model 2800-2061.

Batch/ totalizer functions are also available for analog inputs: the panelmeter model 2026, please see a separate datasheet.

### Application examples

Picture on the right shows an application of a flow sensor with pulse output.

Below an application from piece goods automation.



Scaleable pulse input may be set to indicate the real value on the display, e.g. 1 pulse corresponds to 5,3 m<sup>3</sup> on the display or 1 pulse equals to 15,3 litres.

# Technical specification:

**Sensors:** NPN, PNP, Namur, Closing contact or Pick-up

Input voltage levels: 0 = < 1V, 1 = 5..32V

Sensor supply: 24 VDC  $\pm$  5%, max. 150 mA

Display scaling: on the whole display range

Input frequency range: 0..5 kHz

Decimal selection: 0,001..1

**Measuring method:**  
Counting of input pulses into the counter. Pulses can be scaled to show the desired value on the display.

**Batch control function:**  
Batch control function is based on an alarm relay. When the pre-set value is reached the relay is enabled. The reset is automatic or manual.

**Alarm relays/ Batch controller (optional):**  
You can set alarm value via front panel keys.  
Relay card max. 230 VAC, 0,5 A or  
I/O card 60 V / 0,5 A for frequencies > 1 Hz.

**Serial output (optional):**  
RS-232 and RS-485. Serial output only for measurement reading. Baud rate and address selectable.

**Display memory:**  
Memory card 2000-MEM stores the display value for one week without power supply.

**General:**

Display: 6 digits, bright red (or green) LED, digit height 14,5 mm, brightness selectable

Input filter: digital, freely adjustable

AD-conversion: 16 bits (1/64 000)

Case material: plastic, colour black

Terminals: removable, wire 2,5 mm<sup>2</sup>

Operating temp.: -10..+60 °C

Power supply: 85..240 VAC or 12..30 VDC/24VAC

Case protection: IP65 with a rubber gasket

Weight: 240 g

## How to order:

**2061-MEM-REL2-24VDC**

Type: \_\_\_\_\_

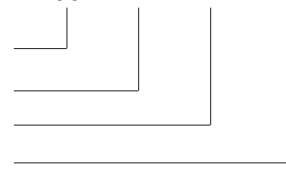
Memory card MEM: \_\_\_\_\_

Alarm card REL2: \_\_\_\_\_

Power supply: \_\_\_\_\_

12..32 VDC/ 24VAC or \_\_\_\_\_

85..240 VAC



**Optional cards (2 options possible at a time):**

Alarm card, 2 relays: 2000-REL2

I/O card (4 I/O lines): 2000-I/O

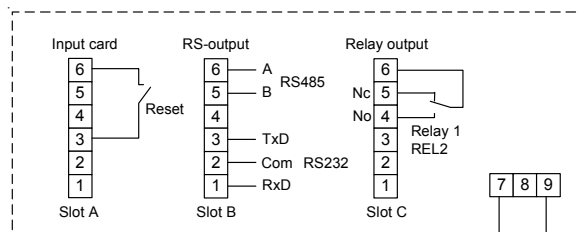
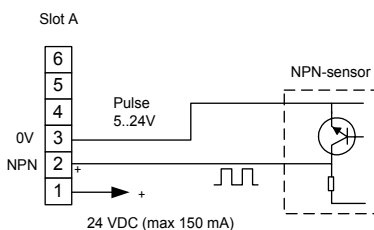
Serial output, RS-232/485: 2000-RS

*(When ordering a panelmeter, the "2000" of the cards is left out.)*

*The panelmeter is also available with a green LED display: please specify 2061GR in the order code.*

## Connections and dimensions:

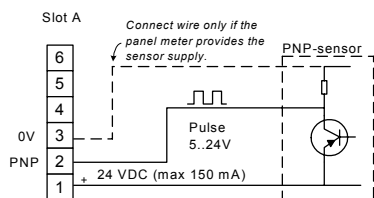
### NPN-input



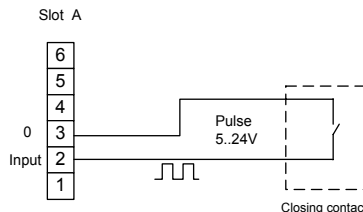
Slot A is always for input cards and slots B and C for optional cards.

Power supply 85..240 VAC or 12..32 VDC/24 VAC (no polarity)

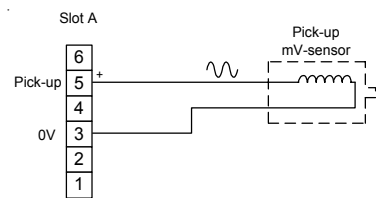
### PNP-input



### Closing contact



### Pick-up input



### Namur-input

